



MERMET

Specifications

Product Type:	Interior / Translucent	Width:	118" (300 cm)
Composition:	100% Polyester / PVC Free 89% Recycled Content	Weight:	1% = 5.87oz / yd ² (199g / m ²) + 5% 5% = 5.01 oz / yd ² (170 g / m ²) + 5%
Standard Packaging:	Rolls of 50 ly (46 lm)	Thickness:	1% = 0.019" (0.49 mm) + 5% 5% = 0.017" (0.44 mm) + 5%

Fenestration Properties*:

Openness Factor: 1% & 5%

UV Blockage: Approximately 95% - 99%

Color #	Color Name	Rs		Tv		G-Value DG	
		1%	5%	1%	5%	1%	5%
00.01	Pewter	43	37	8	14	0.43	0.45
00.02	White	66	56	27	37	0.36	0.39
00.10	Sand	61	54	23	33	0.37	0.40
00.20	Linen	58	52	20	28	0.38	0.41
00.55	Mushroom	46	42	10	18	0.42	0.44
00.71	Suede	39	35	7	13	0.44	0.46
00.15	Dusk	36	31	2	8	0.45	0.47
00.22	Stone	52	49	17	20	0.40	0.41
00.30	Onyx	34	31	5	9	0.46	0.47

*The fenestration property tests were conducted in accordance with EN 14501:2005, ASTM 891, ASTM E903-96; Shading Coefficient (SC), Solar Heat Gain Coefficient (SHGC), Solar Transmittance (Ts), Solar Reflectance (Rs), Solar Absorptance (As), Visible Light Transmittance (Tv); ¼ (6mm) Clear Glass (CL); 4mm Clear Glass, Single Glazing (CL-S); Double Glazing 4mm/16mm/4mm with low E-coating in position 3, space filled with Argon (DG); To calculate shading coefficient: SHGC CL-S / 0.87. Acoustical performance tested in accordance with ASTM C423-09a: NRC is Noise Reduction Coefficient, SAA is Sound Absorption Average. The above data is indicative. For up-to-date test results, performance specifications, and larger samples, contact the Mermet Marketing Department at www.mermetusa.com.

Fabrication Methods*:

Cutting: cold, ultrasonic or crush
Welding: radio frequency, high frequency, impulse, hot air, hot wedge

May require the use of welding tape.
Please contact Mermet for more information about our welding tape product line.

Fire Classifications:

NFPA 701-10 TM#1, California U.S. Title 19

Fungal Resistance:

ASTM G21

Environmental Benefits:

RoHS – Lead Free, PVC Free

Acoustical Performance:

1% = NRC: 0.25, SAA: 0.24

*We recommend testing all cutting and welding methods prior to use to confirm they meet your individual fabrications specifications.

Care and Cleaning:

Regular light dusting with a feather duster is suggested. A hand-held vacuum with low suction may also be used. When vacuuming, avoid pulling or stretching the fabric. Rigorous vacuuming is not recommended since this could distort the fabric. Alternatively, dirt and debris can be blown away using compressed air or a hand-held hair dryer on the cool setting.

MERMET

5970 N. Main Street • Cowpens, SC 29330
Sales Department: Ph (866) 902-9647 • Fx (866) 902-8522
info@mermetusa.com • www.mermetusa.com



00.01 Pewter

1% Openness



00.01 Pewter

5% Openness



00.02 White



00.10 Sand



00.20 Linen



00.55 Mushroom



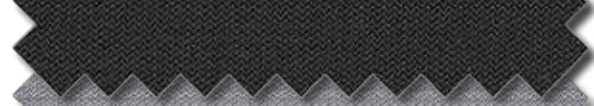
00.71 Suede



00.15 Dusk



00.22 Stone



00.30 Onyx

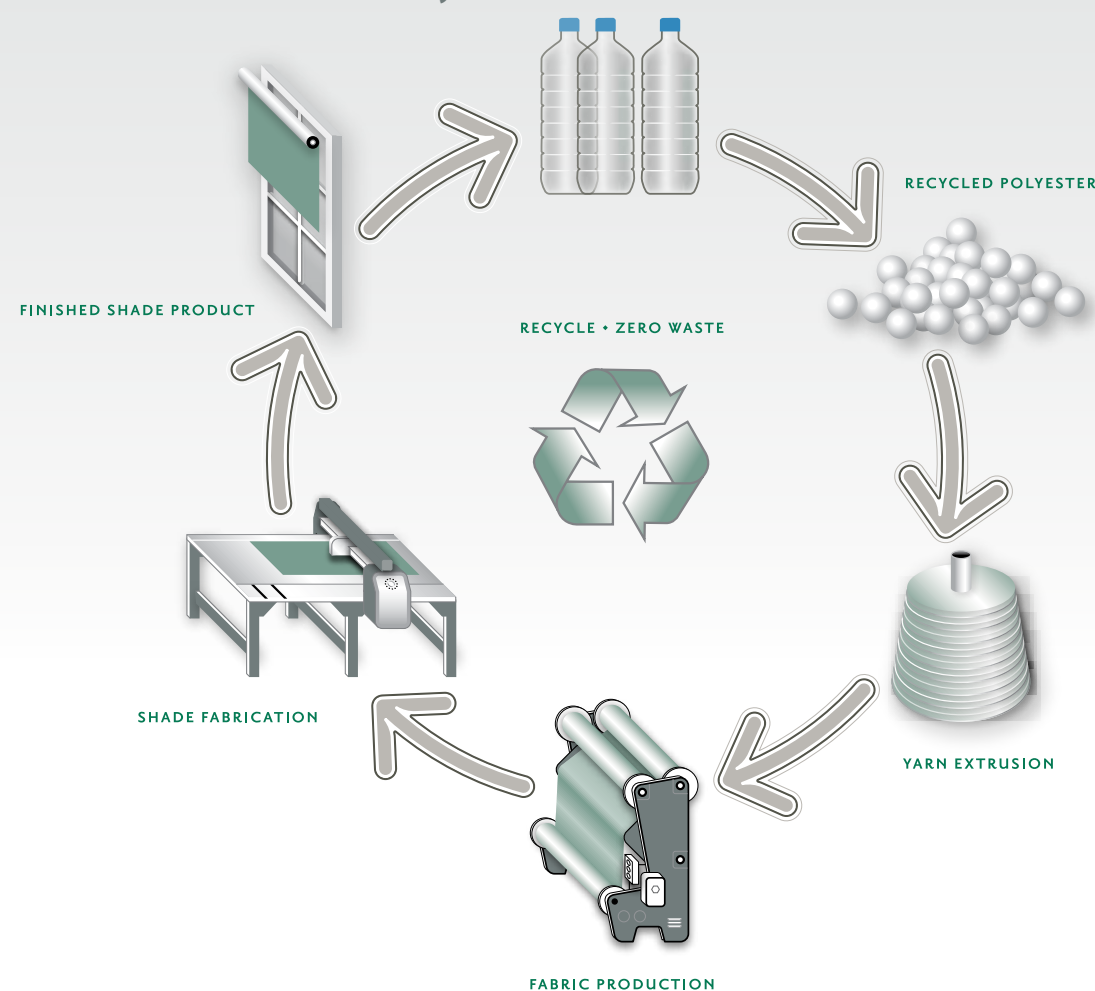
Fabrics sampled on the right are 5% openness. All colors are available in both 1% and 5% openness factors.

Recyclable Designer Shade Fabric

GreenScreen Revive is a 100% recyclable, PVC-free polyester solar shade fabric.

It contains a minimum of 89% Repreve® fibers made from 100% recycled post-industrial fiber and consumer plastic waste. GreenScreen Revive is a Cradle to Cradle Certified™-Silver product which uses 11 recycled bottles per yard of fabric.

GreenScreen Revive Life Cycle



- 100% Recyclable–Zero Waste Product
- PVC-Free
- Made in the USA