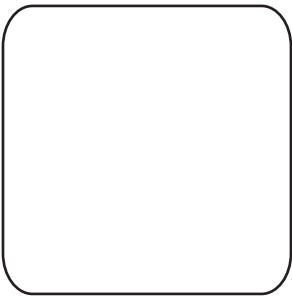
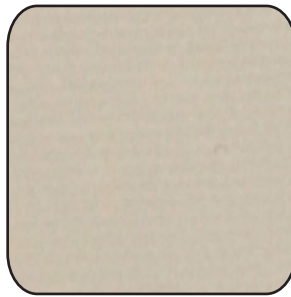




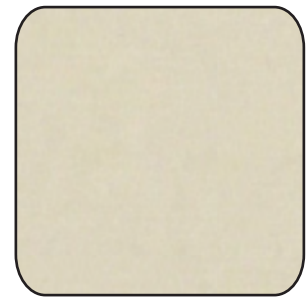
# Blackout Vinyl Fabric



White



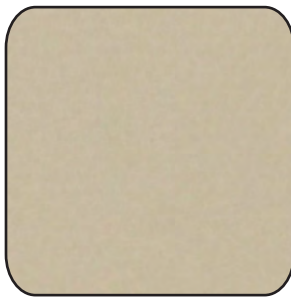
Oyster



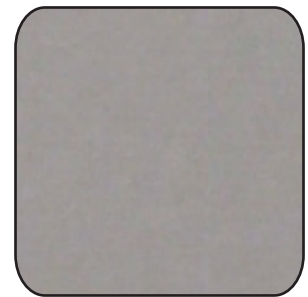
Ivory



Bone



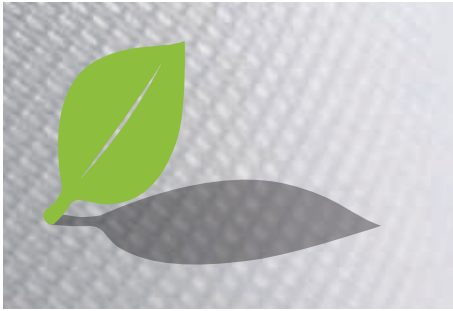
Champagne



Grey



Black



## Blackout Vinyl Fabric Specification Sheet

Style:	Opaque Window Shade Fabric
Construction:	4 ply lamination (3 ply vinyl and 1 ply fiberglass) (Each vinyl is equal thickness and weight)
Surface Texture:	As laminated
Colors:	Alabaster, Azure White, Black, Bone, Bottle, Buff, Champagne, Clay, Cloud White, Cream, Dark Grey, Dark Sand, Dove Grey, Ecru, Federal Blue, Forest Green, Grey, Ivory, Maroon, Navy Blue, Off White, Oyster, Palomino, Sky Blue, Vanilla and White
Thread Count:	60 threads per square inch (+4 / -6) (23 per square cm)
Available Widths:	36", 45", 54", 63", 72", *77" (91 cm, 114 cm, 137 cm, 160 cm, 183 cm, 196 cm) (Other widths and colors available upon request with 200 yard minimum order) *-White only
Roll Lengths:	30 yards standard (Other lengths available on request) (27.4 m)
Weight:	12.5 oz. per square yard (+ / - 2.0) (424 grams per square meter) (+ / - .68)
Thickness:	12.5 mil (+ / - 2.0) (.318 mm) (+ / - .05)
Elmendorf Tear Test Grams:	Warp 2100 Filling 2400
Instron Breaking Strength Lbs./in.:	Warp 100 Filling 77
Washability:	Material may be dusted with a damp cloth. When scrubbing is necessary, warm water, mild detergents, and gentle rubbing are recommended.
Opacity:	Will not admit light.
Flammability:	Meets or exceeds NFPA Standard NFPA 701 Test Method 1 - 2010 Edition (Small Scale) Meets or exceeds California State Fire Marshal Section 13115, Registration No. F-35803 Meets or exceeds State of California Administrative Code Title 19 Section 1237.1 Meets or exceeds NFPA 701-89 Large Scale Test Meets or exceeds FTMS 191 Method 5903 (Based on 12oz. Opaque/Duplex test)
Other Tests Passed:	Meets or exceeds ASTM G-21 – Resistance to Fungi Meets or exceeds AATCC 16, Option 3 – 2003 – Colorfastness to Light Meets or exceeds FTMS 191A, Method 5660 – Colorfastness to Light Greenguard Certificate: 90345-05 Meets or exceeds ASTM 4834-03+CSA.CAN 600.08 Lead Test Fenestration Testing ASHRAE Standard 74-1988 (Based on 12oz. Opaque/Duplex test)