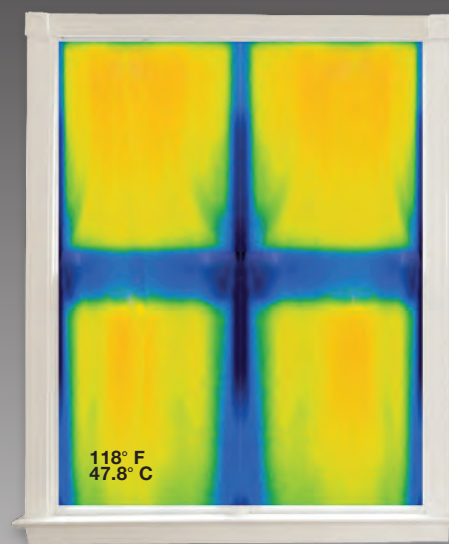
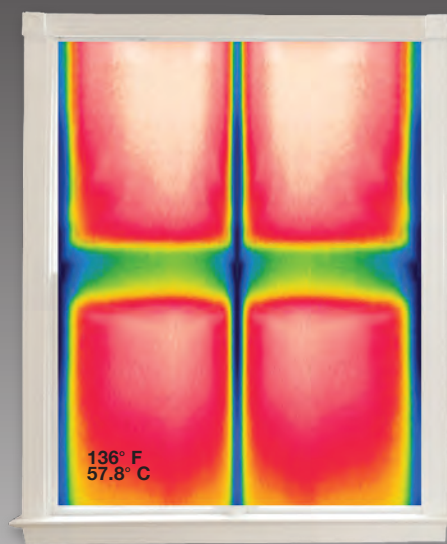


# E Screen | WITH KOOLBLACK TECHNOLOGY

reduced cooling costs & improved comfort  
with the glare control and view-through benefits of dark fabrics



## Standard Dark Screen Fabrics

- high contrast for clear & sharp view through
- coordinated exterior building design
- exceptional glare control

## E Screen with KOOLBLACK™ Technology

- same great features as standard dark screen fabrics
- up to 23% improvement in solar heat gain coefficient (SHGC) / G Value versus standard dark screen fabrics
- reflects NIR solar energy
- improved heat control
- increased energy savings

## innovative, patented science

> **For the first time ever**, KOOLBLACK™ Technology incorporates reflective properties into dark color screen fabrics. This feature, coupled with the other benefits of dark colored fabrics, provides excellent contrast for a clear & sharp view through, color coordinated exterior building design, comfortable work environments, and maximized energy savings through reduced cooling costs.

## total screen benefits

**only E Screen with KOOLBLACK™ Technology can achieve all screen benefits**

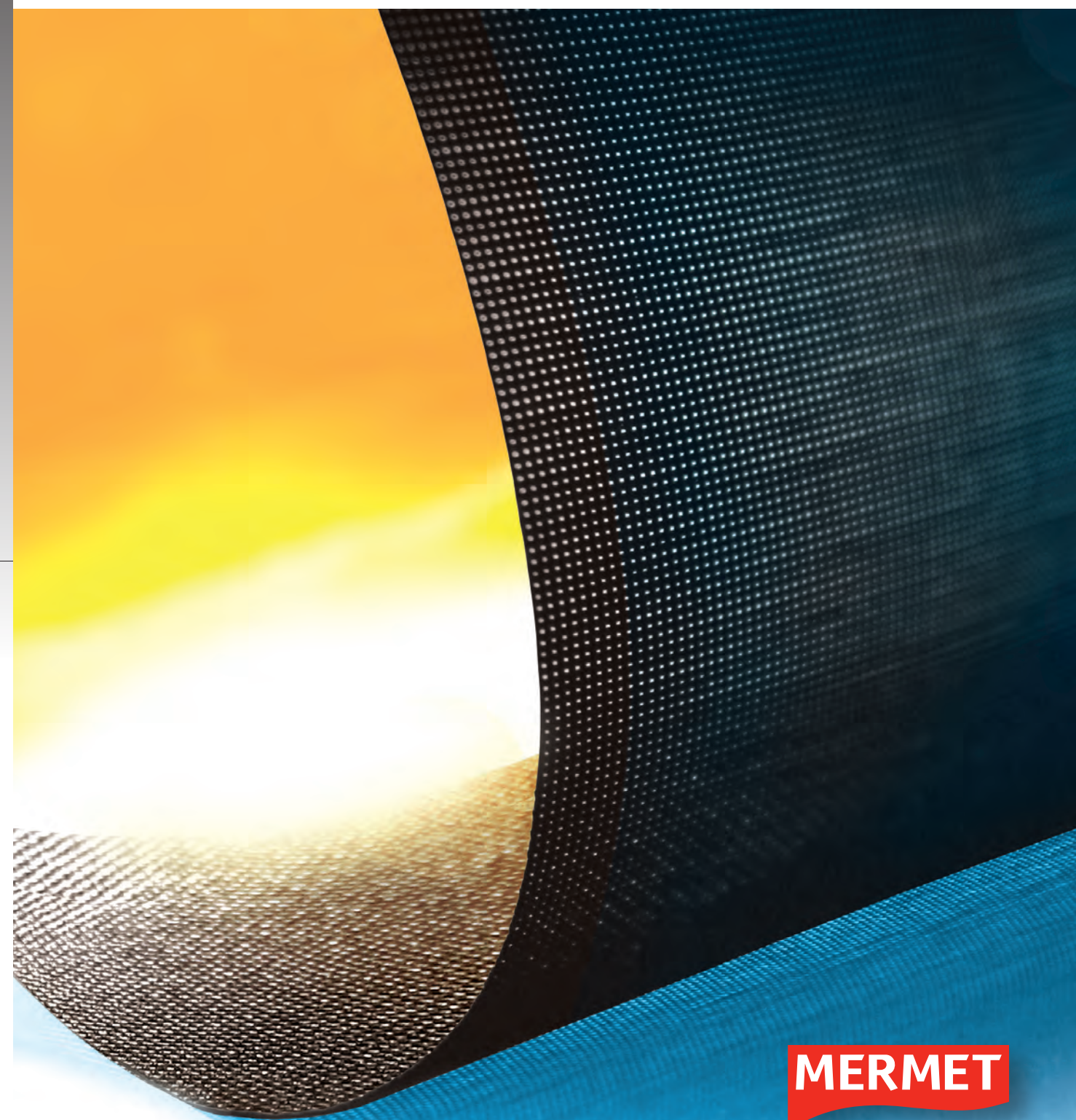
- reduced temperature = lower cooling costs & comfortable work environments
- superior view through and glare control
- coordinated exterior building design and aesthetics

50% of a building's total energy consumption is used for heating & cooling

**MERMET**

More information on Mermet's full line of KOOLBLACK Technology fabrics, E Screen with KOOLBLACK Technology and T Screen with KOOLBLACK Technology, can be found at [www.mermetusa.com](http://www.mermetusa.com).

# E Screen | WITH KOOLBLACK TECHNOLOGY



**MERMET**



## E Screen | WITH KOOLBLACK TECHNOLOGY

**Openness Factor:** 3% & 5%  
**Product Type:** Interior - Transparent  
**Composition:** 36% Fiberglass / 64% Vinyl  
**Standard Packaging:** Rolls of 30 ly (27 lm)

**Width:** 98" (250cm), 122" (310cm)  
**Weight:** 3% = 11.3 oz / yd<sup>2</sup> (382 g / m<sup>2</sup>)  
5% = 10.6 oz / yd<sup>2</sup> (358 g / m<sup>2</sup>)  
**Thickness:** 3% = 0.020" (0.51 mm)  
5% = 0.019" (0.47 mm)

### Fenestration Properties:

Item#	Style Name	Rs		Tv		G-Value DG	
		3%	5%	3%	5%	3%	5%
35.35	Charcoal/Charcoal	34	33	6	6	0.46	0.46
35.32	Charcoal/Cocoa	35	32	6	7	0.46	0.47
32.32	Cocoa/Cocoa	36	36	5	8	0.45	0.45
35.71	Charcoal/Apricot	38	37	6	9	0.45	0.45
32.71	Cocoa/Apricot	42	39	7	10	0.43	0.45

## E Screen Original

**Openness Factor:** 3% & 5%  
**Product Type:** Interior - Transparent  
**Composition:** 36% Fiberglass / 64% Vinyl  
**Standard Packaging:** Rolls of 30 ly (27 lm)

**Width:** 98" (250cm), 122" (310cm)  
**Weight:** 3% = 11.6 oz / yd<sup>2</sup> (393 g / m<sup>2</sup>)  
5% = 10.7 oz / yd<sup>2</sup> (363 g / m<sup>2</sup>)  
**Thickness:** 3% = 0.017" (0.43 mm)  
5% = 0.016" (0.41 mm)

Visit [www.mermetusa.com](http://www.mermetusa.com) to view complete color line and specifications of E Screen Original.

### Fenestration Properties:

Item#	Style Name	Rs		Tv		G-Value DG	
		3%	5%	3%	5%	3%	5%
30.30	Charcoal/Charcoal	4	6	4	4	0.56	0.55
30.61	Charcoal/Cocoa	7	6	3	7	0.55	0.55
61.61	Cocoa/Cocoa	9	9	5	6	0.54	0.54
30.71	Charcoal/Apricot	18	15	7	6	0.51	0.52
61.71	Cocoa/Apricot	19	17	6	8	0.51	0.51

\*The fenestration property tests were conducted in accordance with EN 14501:2005, ASTM 891, ASTM E903-96: G-Value (Solar Heat Gain Coefficient), Solar Reflectance (Rs), Visible Light Transmittance (Tv); Double Glazing 4mm/16mm/4mm with low E-coating in position 3, space filled with Argon (DG); The above data is indicative. For up-to-date test results, performance specifications and larger samples, contact the Mermet Marketing Department at [www.mermetusa.com](http://www.mermetusa.com).

### Fabrication Methods:

Cold, Ultrasonic, Crush, or Laser Cut  
Thermal, High-Frequency, Ultrasonic, or Sewing

### Fire Classifications:

NFPA 701-10 TM#1, California U.S. Title 19  
CAN/ULC-S109-03 Small Flame Test

### Acoustical Performance:

3% = NRC: 0.15, SAA: 0.17  
5% = NRC: 0.10, SAA: 0.12

### Environmental Benefits:

RoHS—Lead Free

### Bacteria and Fungal Resistance:

ASTM G21; ASTM E2180

### Care and Cleaning:

Remove dust with vacuum cleaner or compressed air. Do not scrub. Do not use solvents or any abrasive substance which might damage the coating of the fabric. Clean with a sponge or a soft brush dipped in soapy water using mild detergent. Rinse with clean water. Leave the blind down until completely dry. You can also very gently rub the fabric with a clean white pencil eraser to remove small stains.

© 2014, Mermet Corporation, All rights reserved, US and Foreign patents pending.

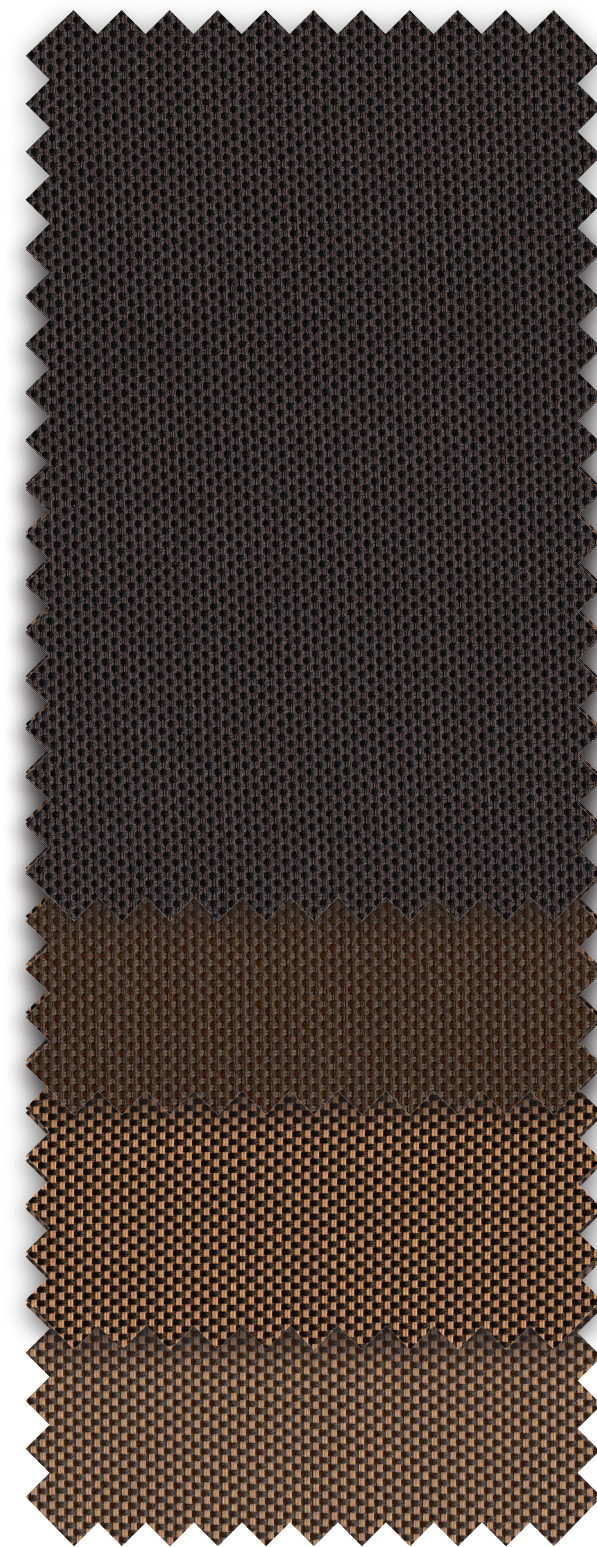
**MERMET**

5970 N. Main Street • Cowpens, SC 29330  
**Sales Department:** Ph (866) 902-9647 • Fx (866) 902-8522  
[info@mermetusa.com](mailto:info@mermetusa.com) • [www.mermetusa.com](http://www.mermetusa.com)



# E Screen | WITH KOOLBLACK™ TECHNOLOGY

Transparent | 3% Openness | 5% Openness



35.32  
Charcoal/  
Cocoa

32.32  
Cocoa/  
Cocoa

35.71  
Charcoal/  
Apricot

32.71  
Cocoa/  
Apricot



3% Openness

35.35 Charcoal/Charcoal



5% Openness

35.35 Charcoal/Charcoal



## perfect commercial solution

a combination of E Screen with KOOLBLACK™ Technology & E Screen Original

**where** Eastern & Western Exposures  
**what** E Screen with KOOLBLACK™ Technology  
**why** Improved Comfort & Energy Savings

**where** Northern & Southern Exposures  
**what** E Screen Original  
**why** Value Offering & Seamless Coordination

The combination of E Screen with KOOLBLACK™ Technology and E Screen Original, in coordinating colors, achieves a seamless exterior design appearance and cost savings solution for commercial applications.

benefits of dark screens with KOOLBLACK™ Technology

- excellent glare control
- crisp, clear view to the outside
- coordinated exterior building design
- reflects NIR solar energy
- improved comfort
- energy savings

benefits of standard dark screen fabrics

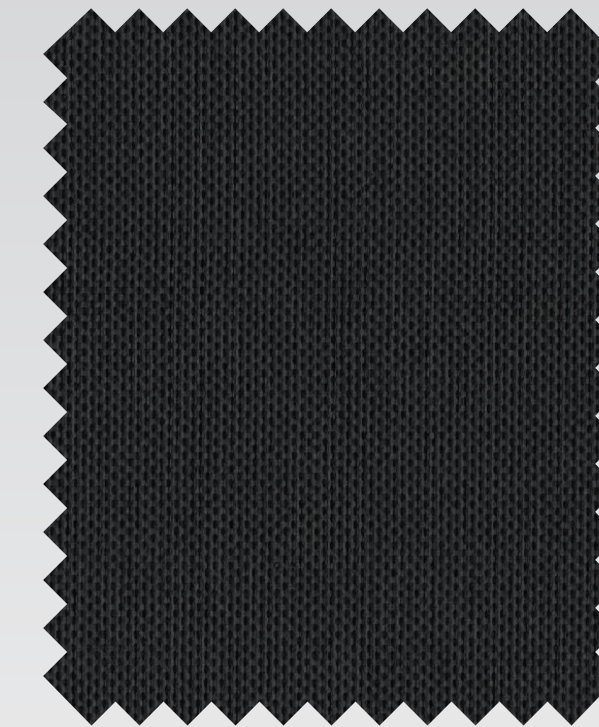
- excellent glare control
- crisp, clear view to the outside
- coordinated exterior building design



# E Screen Original

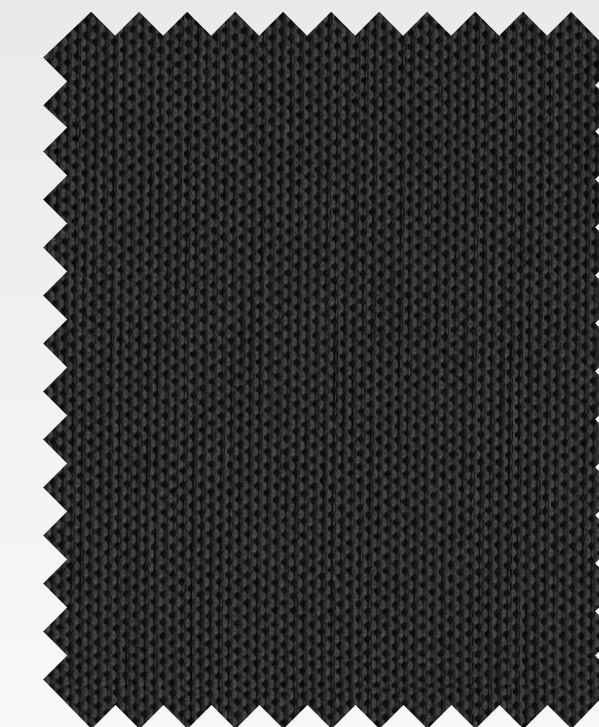
Transparent | 3% Openness | 5% Openness

**MERMET**



3% Openness

30.30 Charcoal/Charcoal

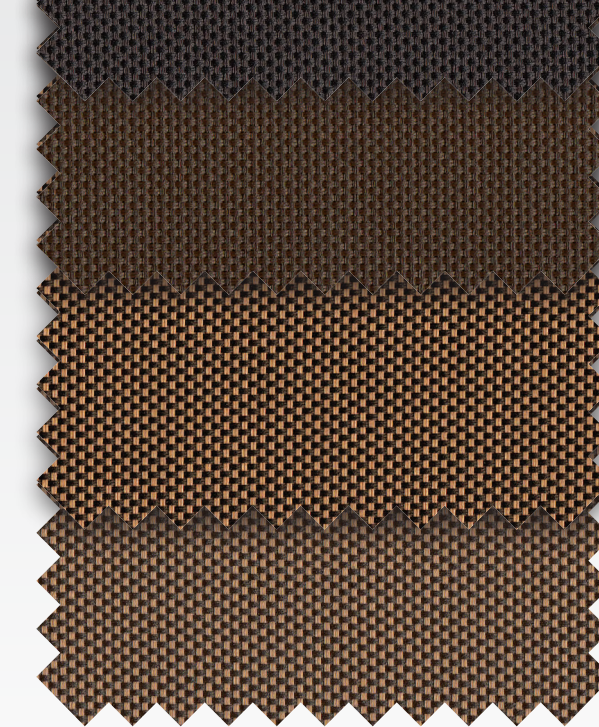


5% Openness

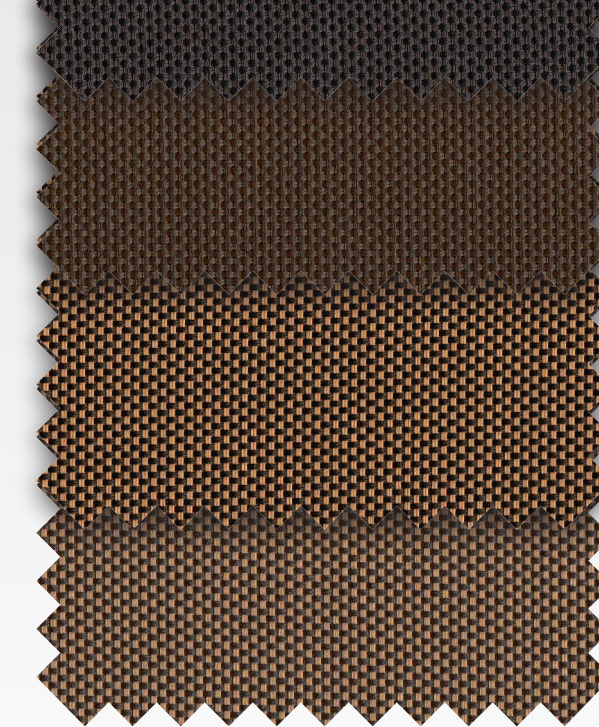
30.30 Charcoal/Charcoal



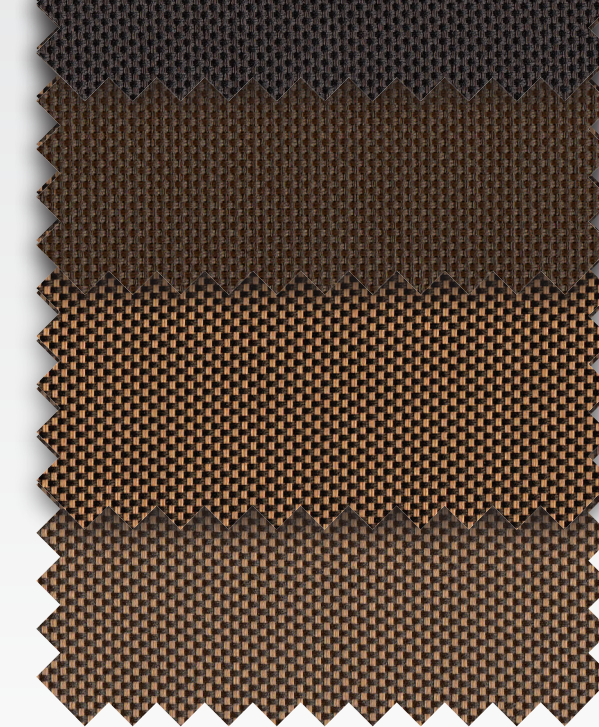
30.61  
Charcoal/  
Cocoa



61.61  
Cocoa/  
Cocoa



30.71  
Charcoal/  
Apricot



61.71  
Cocoa/  
Apricot

Fabrics sampled on the left are 5% openness. All colors are available in both 3% and 5% openness factors.

Fabrics sampled on the right are 5% openness. All colors are available in both 3% and 5% openness factors. Visit [www.mermetusa.com](http://www.mermetusa.com) to view complete color line and specifications of E Screen Original.